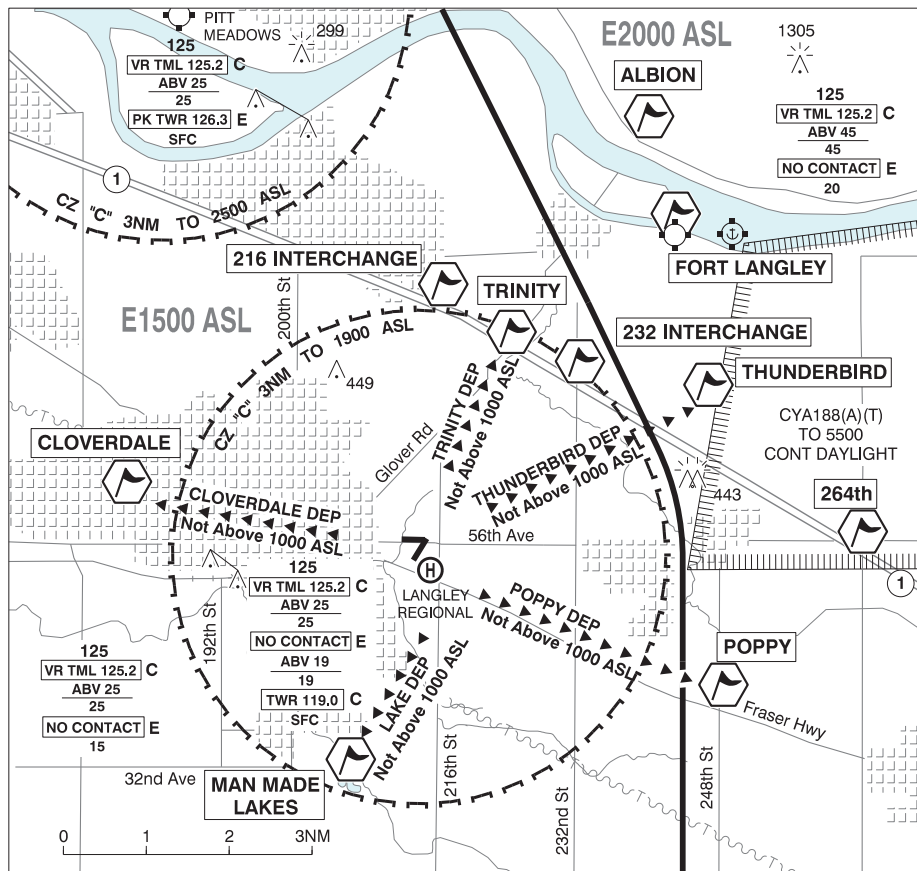


**LANGLEY REGIONAL VFR TERMINAL PROCEDURES CHART / FIXED WING ARR/DEP**



LOCATION	IDENT	LAT/LONG
216 INTERCHANGE	VCEXC	N49°09'08.00" W122°37'27".00
232 INTERCHANGE	VCXCH	N49°08'11.01" W122°34'53.00"
MAN MADE LAKES	VCMML	N49°03'17.00" W122°39'11.00"
THUNDERBIRD	VCTBD	N49°07'53.57" W122°32'28.42"
TRINITY	VCTNY	N49°08'32.77" W122°36'10.07"

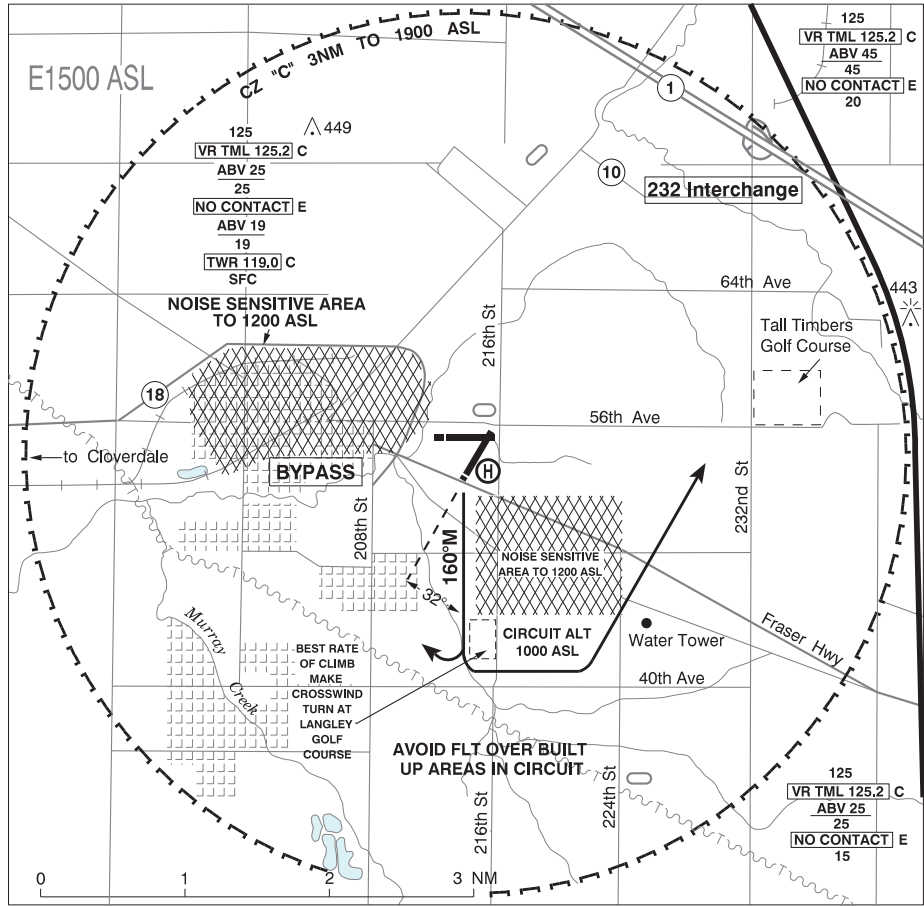
**ARRIVAL**

- Obtain ATIS 124.5.
- Contact tower 119.0 five miles from airport at 1500 ASL or above.
- Anticipate inbound clearance via VFR reporting point.

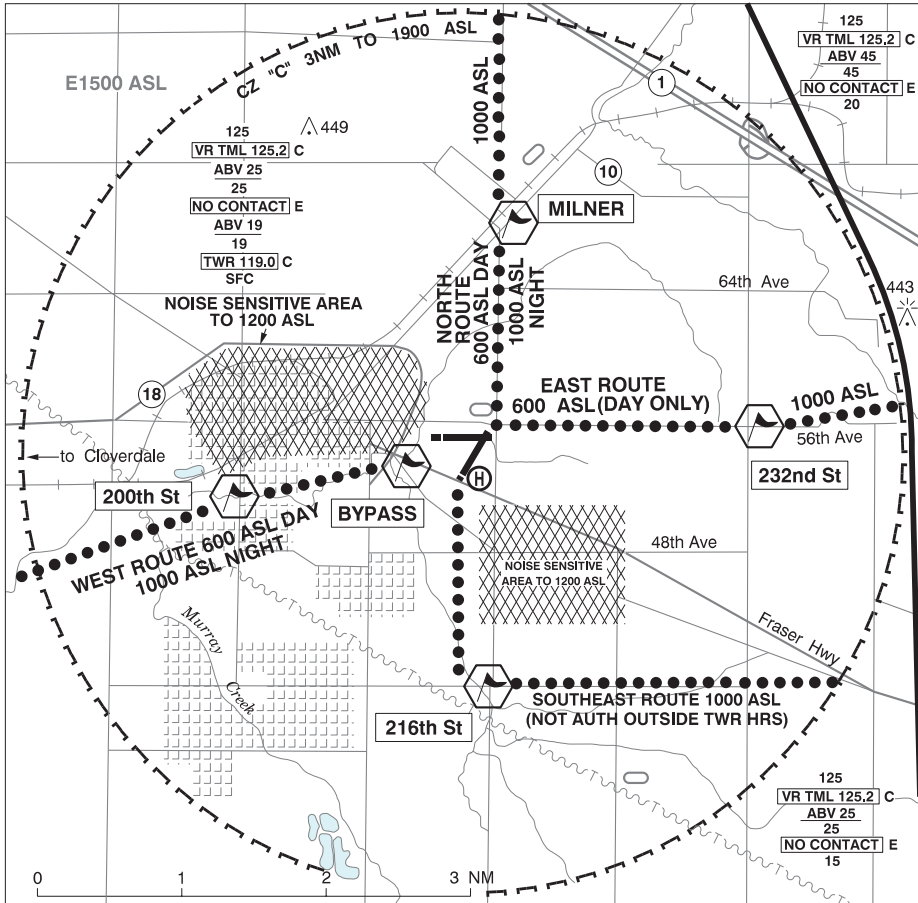
**DEPARTURE**

- Follow local noise avoidance procedures.
- Intercept outbound route 1 mile from airport.
- Maintain 1000 ASL until exiting the Control Zone or instructed by ATC.

**LANGLEY REGIONAL VFR TERMINAL PROCEDURES CHART / FIXED WING CIRCUITS RWY 19**



LANGLEY REGIONAL VFR TERMINAL PROCEDURES CHART / HELI



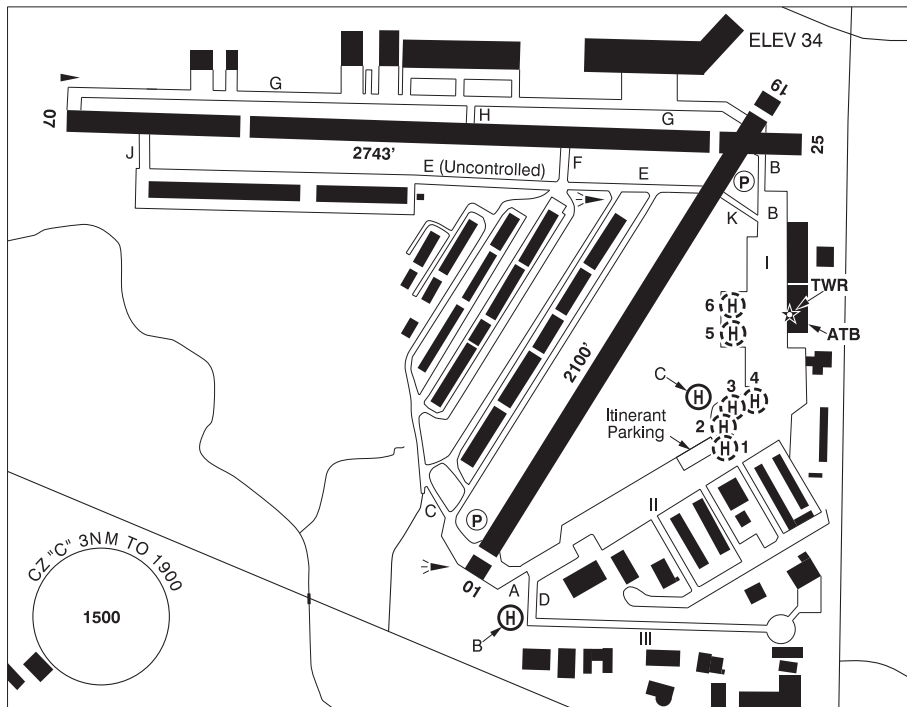
LOCATION	IDENT	LAT/LONG
200th St	VCXCC	N49°05'45" W122°40'07"
BYPASS	VCBYP	N49°06'04" W122°38'35"
MILNER	VCMER	N49°07'35" W122°37'29"
232nd St	VCSND	N49°06'14" W122°34'52"
216th St	VCXVI	N49°04'28" W122°37'29"

**BRITISH COLUMBIA**

**AERODROME/FACILITY DIRECTORY**

**LANGLEY REGIONAL BC**

**CYNJ**



<b>REF</b>	N49 06 03 W122 37 51 Adj 17°E (2013) UTC-8(7) Elev 34' VTA A5004 LO2 T1 CAP
<b>OPR</b>	Township of Langley 604-534-7330 APM 1500-0130Z± Cert
<b>PF</b>	B-1,2,3 C-4,5,6
<b>CUST</b>	AOE/CAN
<b>FLT PLN</b>	<p><b>FIC</b> Kamloops 866-WXBRIEF (Toll free within Canada) or 866-541-4101 (Toll free within Canada &amp; USA)</p> <p><b>ACC</b> Vancouver IFR 604-586-4590/4591; IFR tng flts PPR ctc 604-586-4592; ctc Victoria Tml 604-586-4561 for IFR clnc when TWR clsd.</p> <p><b>DUAT</b> APM'S office</p> <p><b>WX</b> LAWO 1630-0230Z (DT 1530-0330Z)</p>
<b>SERVICES</b>	<p><b>FUEL</b> 100LL (self-serve), JA-1 (1530-0100Z± by truck, 604-360-2306)</p> <p><b>OIL</b> All</p> <p><b>S</b> 1,2,3,4,5</p>
<b>RWY DATA</b>	<p>Rwy 07(075°)/25(255°) 2743x75 ASPH Thld 07 displ 654'. Thld 25 displ 343'. Avbl dur twr oprg hrs only. Ngt ops not auth.</p> <p>Rwy 01(015°)/19(195°) 2100x75 ASPH Thld 01 displ 104'. Thld 19 displ 96'. Rwy 01 preferred rwy when twr clsd. Rwy 01 designated calm wind rwy.</p>
<b>RWY CERT</b>	<p>Rwy 01/19 AGN I</p> <p>Rwy 07/25 AGN I</p>
<b>TWY</b>	Twy E uncontrolled west of Twy F.
<b>APRON</b>	Apron I & II wing tip clearance less than 50' wide in some areas
<b>RCR</b>	Twr 604-514-9324 Ltd win maint Aprt rstd to a max wt of 12,500 lbs exc with opr auth PLR

## BRITISH COLUMBIA

## AERODROME/FACILITY DIRECTORY

## LANGLEY REGIONAL BC (Cont'd)

CYNJ

<b>HELI DATA</b>	<p>B - FATO 110' dia ASPH TLOF 28' dia ASPH Safety Area 143' dia  Max heli length 58' (exc with opr appr) 20,500 lbs. Medevac flt only 06-15Z±.  C - FATO/TLOF 85' dia ASPH Safety Area 110' dia  Max heli overall length 59' (exc with ops appr). 20,500lbs. Day only.  Parking Pad 1: 31' dia CONC 3600 lbs For temporary prkg and refueling only (100LL only).  Parking Pads 2-4: 31' dia CONC 3600 lbs Private.  Parking Pads 5 &amp; 6: 66' dia ASPH 14,000lbs Max heli overall length 55'</p>
<b>LIGHTING</b>	<p>01-(TE ME) P1 4.5°, 19-(TE ME) AP 4.0°  FATO-B: RW no aiming pt (LO) ARCAL-119.0 type J  (FATO-B use ONLY, No ARCAL on rwy)  Rwy 01/19 and Helipad A lgts on single setting after twr hrs til 07Z± by automatic timer.</p>
<b>COMM</b>	<p><b>ATIS</b> 124.5 1-877-517-2847 1630-0230Z (DT 1530-0330Z)  <b>GND</b> 121.9 1630-0230Z (DT 1530-0330Z)  <b>TWR</b> 119.0 (V) 1630-0230Z (DT 1530-0330Z) (emerg only 604-534-9443)  <b>MF</b> ffc 119.0 0230-1630Z (DT 0330-1530Z) 3NM 1900 ASL (CAR 602.98)</p>
<b>NAV</b>	<p><b>VOR</b> PITT MEADOWS YPK 112.4 N49 12 57 W122 42 54 (44')</p>
<b>PRO</b>	<p><b>No circuits on any rwy from 2130-0800 local time.</b></p> <p><b>RWY 19 DEPARTURES</b>  Best rate of climb.  Climb rwy hdg til S of Fraser Hwy.  Turn left track aprx 160° to follow green belt.  Make crosswind turn S of 44th Ave over Langley Golf Centre.  Make turn to downwind E of 224th St towards Tall Timbers Golf Course.  Follow VTPC FIXED WING CIRCUITS RWY 19.  Avoid flt over built up areas on crosswind and downwind legs.  Circuit altitude 1000 ASL.</p> <p><b>RWY 25 DEPARTURES</b>  Rgt hand circuits (CAR 602.96). Best rate of climb. Rwy 07/25 shall not be used when twr is clsd.</p> <p><b>VFR ARR/DEP ROUTES</b>  See FIXED WING ARR/DEP VTPC</p> <p><b>ATS REQUIREMENTS:</b>  All VFR acft arriving, departing or transiting the Vancouver or Victoria Tower Class C or D airspace require a transponder code.  - All acft departing Vancouver or Victoria Intl (including Water Aerodrome) call Kamloops FIC at 866-541-4101 or PAC RDO 122.5 or 123.15 for code assignment at least 30 min prior to flight or file a VFR Flight Plan/Flight Itinerary.  - All acft arriving Vancouver, Victoria Intl (including Water Aerodrome) or transiting Vancouver or Victoria Control Zones obtain a code from one of the following ATS units: Vancouver Harbour, Nanaimo, Victoria Harbour, Boundary Bay, Langley, Abbotsford or Pitt Meadows or call Kamloops FIC at 866-541-4101 or PAC RDO 122.5 or 123.15.  -All acft arriving Victoria Intl from a non NAV CANADA site call Kamloops FIC at 866-541-4101 or PAC RDO 122.5 or 123.15 for code assignment at least 30 minutes prior to flight or file a VFR Flight Plan/ Flight Itinerary.</p>

**BRITISH COLUMBIA**

AERODROME / FACILITY DIRECTORY

**LANGLEY REGIONAL BC (Cont'd)**

**CYNJ**

<p><b>PRO (Cont'd)</b> <b>HELI</b></p>	<p>Day: East route dep expedite climb to 600 ASL prior to 232nd street. East of 232nd street commence climb to 1000 ASL. East route arr maintain 1000 ASL descend to 600 ASL prior to 232nd street. South East route dep expedite climb to 1000 ASL prior to 216th street. South East route arr maintain 1000 ASL to 216th street. North route dep expedite climb to 600 ASL prior to Milner. North of Milner commence climb to 1000 ASL. North route arr maintain 1000 ASL descend to 600 ASL prior to Milner.                  Night: North route arr/dep overfly Rwy 01 min alt 1000 at Milner.                  West route arr/dep overfly Fraser hwy min alt 1000 ASL at bypass. Medium to hvy heli are only permitted to gnd taxi on Apron III. Hover taxiing on Apron III proh unless coordinated with APM.                  All Heli must ctc GND 121.9 for transponder code and routing info. All Heli must ctc GND 121.9 prior to start. NORDO arr pro use W routing. Remain over Langley bypass, west of Rwy 01/19 and south of Rwy 07/25 til obtaining visual confirmation from twr BPOC.</p>
<p><b>CAUTION</b></p>	<p>Trees to 100 AGL 250' SE pad B, 250' W Thld 07, and S of Fraser hwy. Only pilots familiar with airport should use airport dur hrs of darkness. Use caution when taxiing on Apron I &amp; II due to min wing tip clearance. Heli aiming point at eastern end of Apron III. Ocsl wildlife.</p>