

Township of Langley Licensed Preschool

2021/2022 Registration



Locations:

Curiosity Grove at Walnut Grove Community Centre
Little Wise Guys at W.C. Blair Recreation Centre

COURSE INFORMATION

Child must be the age listed below by December 31, 2021

2x/week

Tuesdays and Thursdays

Morning class: 9:00am - 12:00pm for 3-year-olds

Afternoon class: 12:30 - 3:30pm for 3-year-olds

Fall 2021

September 21 - December 16

Winter 2022

January 4 - March 10

Spring 2022

March 29 - June 16

COURSE INFORMATION

Child must be the age listed below by December 31, 2021

3x/week

Mondays, Wednesdays, and Fridays

Morning class: 9:00am - 12:00pm for 4-year-olds

Afternoon class: 12:30 - 3:30pm for 4-year-olds

Fall 2021

September 20 - December 17

Winter 2022

January 5 - March 11

Spring 2022

March 28 - June 17

REGISTRATION INFORMATION

► When to Register

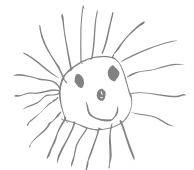
August 16, 2021 @ 12:00pm :

- Options for new registrants:
 - » register for any available space
 - » waitlist for full classes

July 29 - August 9

- Previous participants can register for the 2021/2022 school year.
- Previous participants wanting an alternate time slot are waitlisted.
- Immediate family members of previous participants may register for the 2021/2022 school year.

Names on waiting lists are contacted on a first-come, first-served basis.



► How to Register

- Register at tol.ca/recregister.
- A \$50 non-refundable registration fee is required at the time of registration to secure your child's spot.
- Visit tol.ca/preschool to download registration documents. Complete and email documents to licensedpreschool@tol.ca.
- Township of Langley staff will contact you to confirm receipt of documents and to process payment or schedule monthly payments.

► Mandatory Registration Requirements

- A \$50 non-refundable registration fee to secure your child's spot.
- Payment in full, or initiation of monthly payments (see back for details).
- Copies of:
 - » child's birth certificate (proof of age).
 - » completed registration forms.
- Child must be toilet trained.



► Payment Options

1. Payment in full at time of registration

- Pay by cash, cheque or credit card



2. Monthly scheduled payments*

- Provide a credit card number:
 - » payment schedules will be confirmed upon registration as course fees are dependent on the number of classes each month.
 - » Provide post-dated cheques.

*All payment information is kept confidential and secure.

Class	Yearly Fee*
Mo/We/Fr 9:00am - 12:00pm	\$2,646.00
Mo/We/Fr 12:30 - 3:30pm	\$2,646.00
Tu/Th 9:00am - 12:00pm	\$1,863.00
Tu/Th 12:30 - 3:30pm	\$1,863.00

*Amount does not include \$50 non-refundable registration fee.

Withdrawal Policy

To withdraw from our program, one month's notice is required to be provided in writing by the 1st of the month. For example, if you plan to leave the preschool on February 1, we require written notice of withdrawal on or before January 1.

Financial Support & Information

Financial Assistance is available through the Affordable Child Care Benefit program for licensed programs: www.gov.bc.ca/affordablechildcarebenefit.

Fees

Prices for the 10 month preschool calendar year are determined by the scheduled session hours.

Winter Break & Spring Break

Preschool classes close during School District No. 35's two week winter and spring breaks; school is not in session and you do not pay for these weeks.

Other Closures

Participants do not pay for days the preschool is closed, including district wide pro-d days. All excluded days will be communicated during the first week of preschool in September.

