



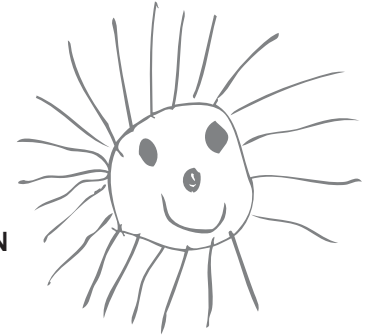
# Walnut Grove Community Centre

---

## Curiosity Grove Licensed Preschool

---

### 2019/2020 Registration



#### COURSE INFORMATION

##### Classes for 3-year-olds

Child must be 3 years old before December 31, 2019

2x/week

Tuesday and Thursday

Morning class: 9:00 – 11:15am

Afternoon class: 12:00 – 2:15pm \*For 3-5yr olds

Fall 2019

September 10 – December 19

Winter 2020

January 7 – March 12

Spring 2020

March 31 – June 11

##### Classes for 4/5-year-olds

Child must be 4 years old before December 31, 2019

3x/week

Monday, Wednesday, and Friday

Morning class: 9:00 – 11:30am

Afternoon class: 12:00 – 2:30pm \*For 3-5yr olds

Fall 2019

September 9 – December 20

(no classes October 4, 14, 18, November 11)

Winter 2020

January 6 – March 13 (no classes February 14, 17)

Spring 2020

March 30 – June 12 (no classes April 10, 13, May 1, 20)

#### REGISTRATION INFORMATION

##### ► When to Register

January 7, 2019:

- options for new registrants:
  - register for any available space
  - wait-list for full classes

December 3, 2018 – January 2, 2019:

- current participants can register for the same time slot for the 2019/2020 school year
- current participants wanting an alternate time slot are waitlisted
- immediate family members of current registrants may register for the 2019/2020 school year

January 3 – 5, 2019:

- current registrants waitlisted for an alternate time slot are contacted and offered registration

Names on waiting lists are contacted on a first-come, first-served basis.

##### ► How to Register

- First-time registrations must be completed in person (see address on other side of page)
- Current participants may register by phone if personal and emergency information on file is current

##### ► Mandatory Registration Requirements

- \$50 non-refundable registration fee to secure your child's spot
- payment in full (monthly payments or credit card; see back)
- copies of:
  - child's birth certificate (proof of age)
  - completed registration forms



## ► Payment Options

### 1. Payment in full at time of registration

- Pay by cash, cheque, credit card, or debit card



### 2. Monthly scheduled payments\*

- supply 10 post-dated cheques (see table below for amounts)
  - make cheques payable to: Township of Langley
  - allow 5–10 business days for cheques to be processed
- provide a credit card number
  - payments are processed on the 15<sup>th</sup> of each month starting August 15 and ending May 15

\*All payment information is kept confidential and secure.

## Fees

Prices for the 10 month preschool calendar year are determined by the scheduled session hours.

### Spring Break

Preschool classes close during School District No. 35's two week spring break; school is not in session and you do not pay for these two weeks. If the school district determines spring break to be only one week, registrants must pay for the unscheduled week of preschool.

### Other Closures

Registrants do not pay for days the preschool is closed, e.g. winter break and Pro-D days.



|                                  | 2x/ week        | 3x/ week        |
|----------------------------------|-----------------|-----------------|
| Total cost*                      | \$1415.70       | \$2044.00       |
| Monthly Scheduled Payment Dates* | Payment Amount  | Payment Amount  |
| August 15, 2019                  | <b>\$141.57</b> | <b>\$204.40</b> |
| September 15, 2019               |                 |                 |
| October 15, 2019                 |                 |                 |
| November 15, 2019                |                 |                 |
| December 15, 2019                |                 |                 |
| January 15, 2020                 |                 |                 |
| February 15, 2020                |                 |                 |
| March 15, 2020                   |                 |                 |
| April 15, 2020                   |                 |                 |
| May 15, 2020                     |                 |                 |

\*Amount does not include \$50 non-refundable registration fee.

## Withdrawal Policy

To withdraw from our program, one month's notice is required; provide written notice by the 1<sup>st</sup> of the month.

For example, if you plan to leave the preschool on February 1, we require written notice of withdrawal on or before January 1. Unprocessed post-dated cheques or credit card slips will be returned.

## Curiosity Grove

Walnut Grove Community Centre  
8889 Walnut Grove Drive  
604.882.0408

Recreation Culture  
& Parks

tol.ca