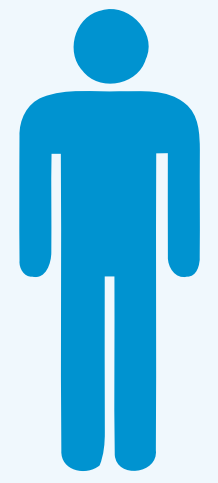


# PARKS INFRASTRUCTURE

The Township of Langley takes pride in providing and maintaining parks infrastructure for our community.



2020

140,200

forecast  
2031

186,000

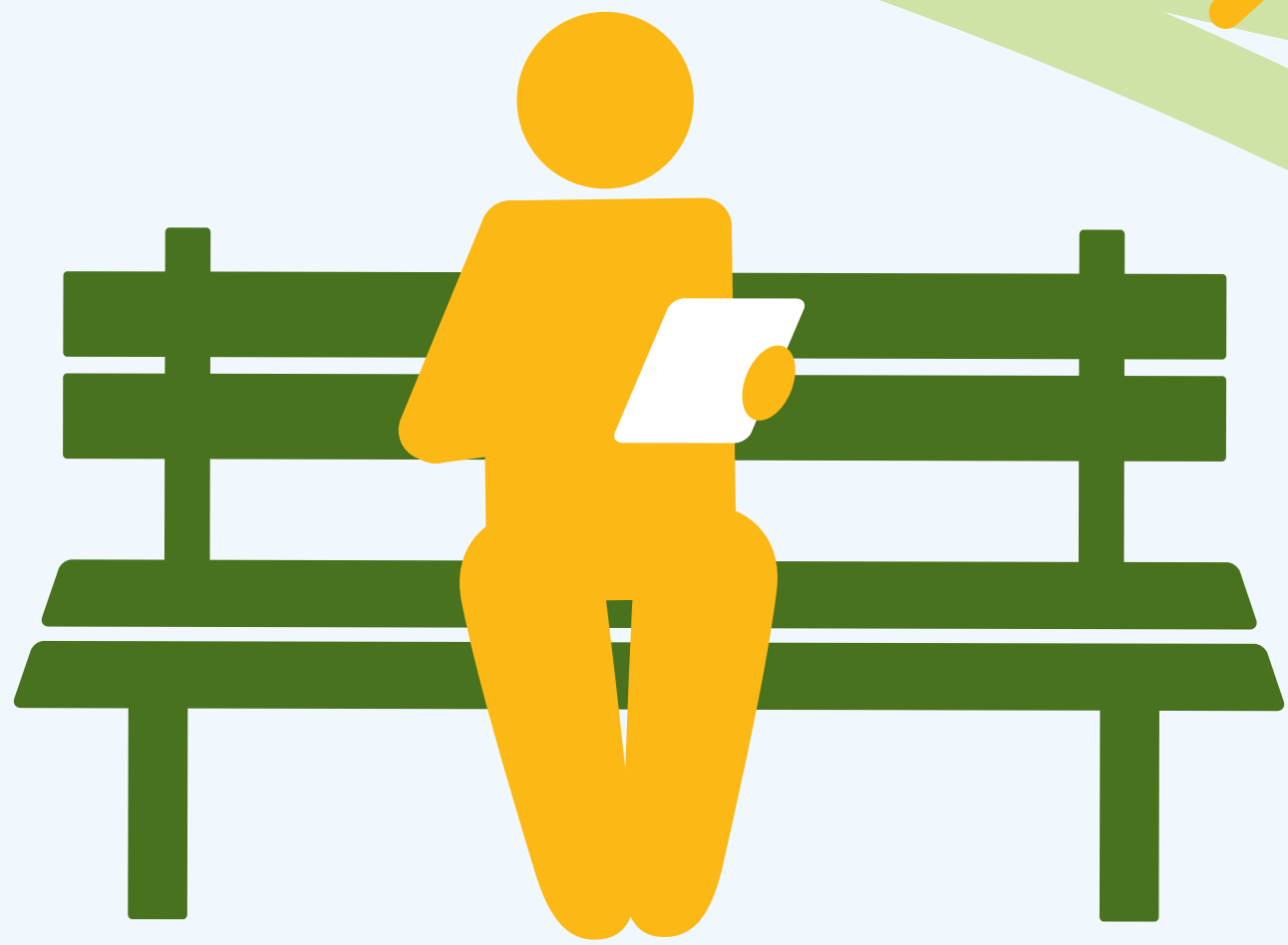
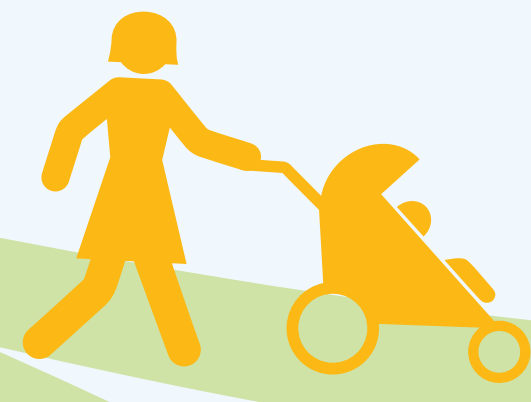
**POPULATION GROWTH** has increased demands on the Township's parks.

More funding is required to maintain, renew, and replace aging infrastructure.



**34,000**  
SPORT FIELD  
USERS

on average, are active at Township parks/venues annually (2017)



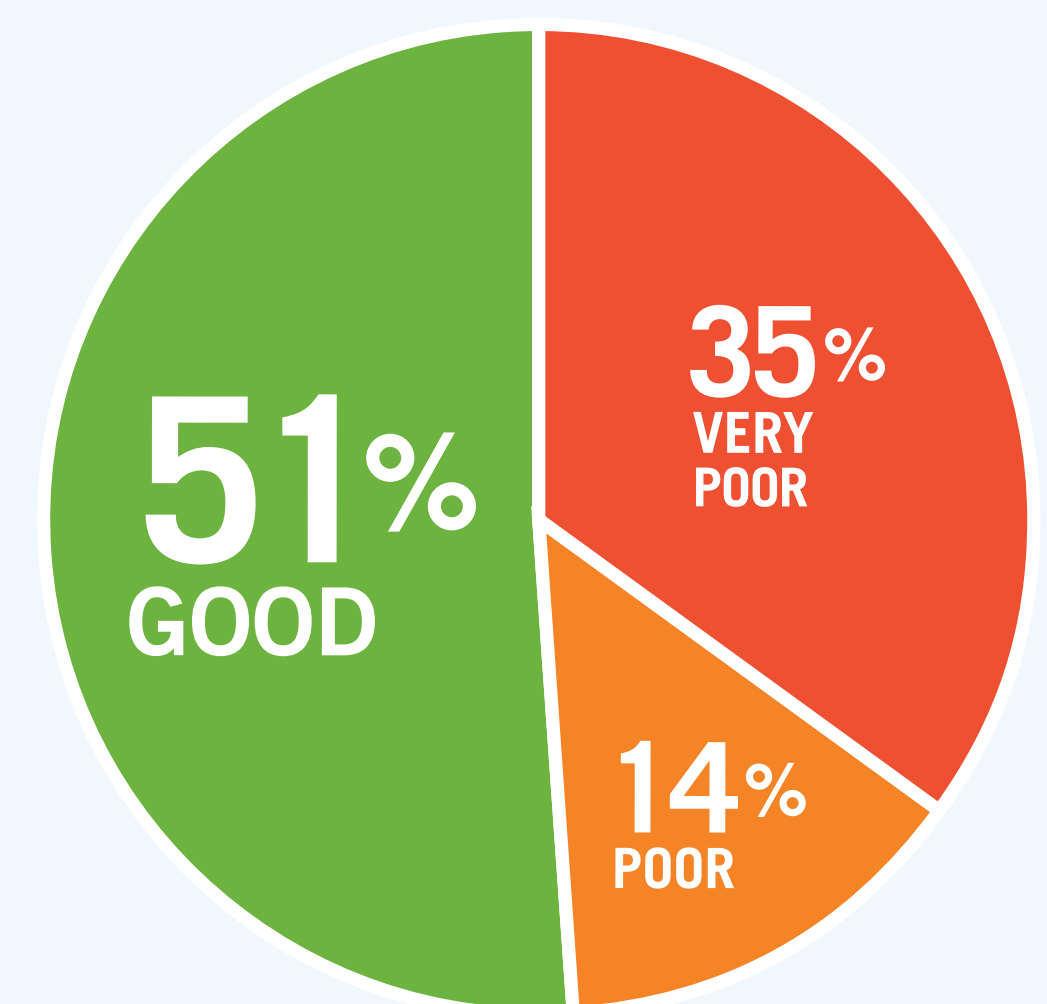
## THE TOWNSHIP'S PARKS SYSTEM

has grown to include:

## CONDITION OF INFRASTRUCTURE



... and much more.



Township of  
**Langley**  
Est. 1873

An increase in infrastructure funding is required to continue providing safe and functional parks now and into the future.